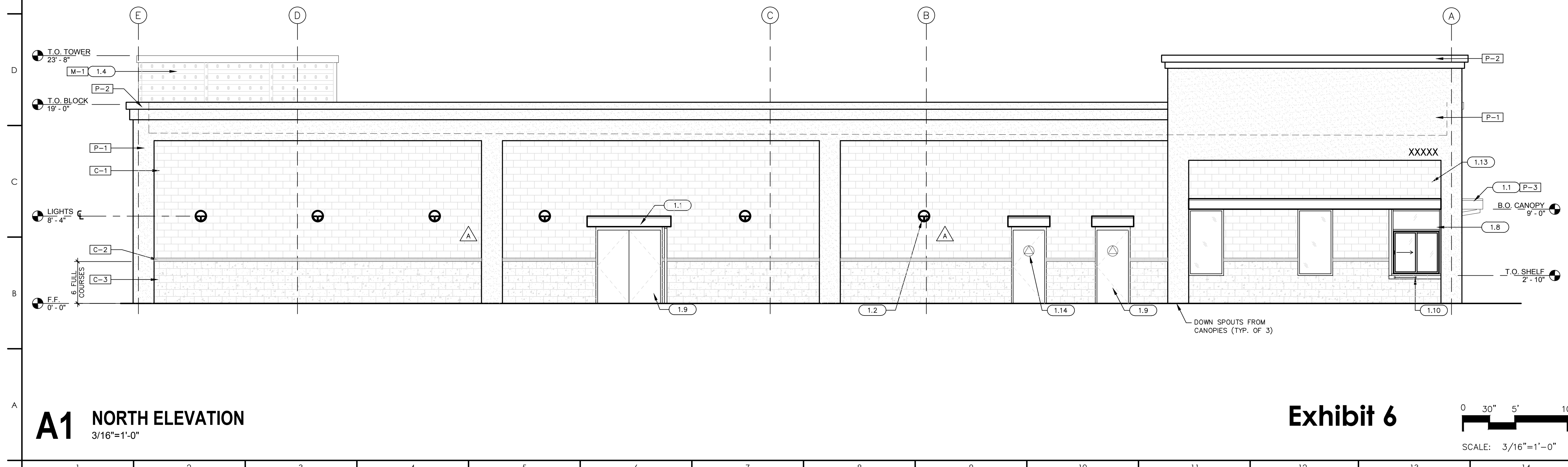


F1 WEST ELEVATION
3/16"=1'-0"

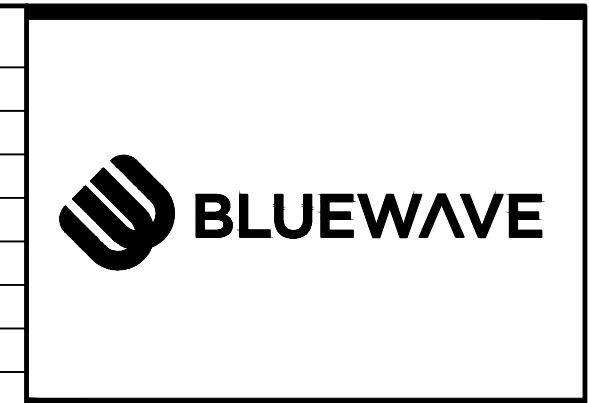


A1 NORTH ELEVATION
3/16"=1'-0"

EXTERIOR COLOR LEGEND			
MARK	COLOR	MATERIAL	MANUF.
P-1	DRIFT WOOD	STUCCO	BENJAMIN MOORE
P-2	SIERRA SPRUCE	STUCCO	BENJAMIN MOORE
P-3	BLUE		
C-1	320	GROUND FACE CMU	BASALITE
C-2	684	SMOOTH FACE CMU	BASALITE
C-3	336	SPLIT FACE CMU	BASALITE
M-1	A23	CORRUGATED, PERFORATED METAL PANEL SYSTEM	ATAS INTERNATIONAL

- ELEVATION KEY NOTES**
- PRE-ENGINEERED ALUM. CANOPY, 4'-0" DEEP (TYP.)
 - SCHEDULED WALL MOUNTED LIGHT FIXTURE
 - PRE-FINISHED ROLLING OVERHEAD DOOR
 - CORRUGATED PERFORATED METAL PANEL SYSTEM, PROVIDE 4" FRAMING GIRTS AT MIN. 48" O.C. COORDINATE W/ GROUTED CMU CELLS, GAUGE TO BE SPECIFIED AND ENGINEERED BY FRAMING SUBCONTRACTOR & COORDINATED WITH METAL PANEL MFR.
 - DOWN SPOUT, PAINT TO MATCH CMU #320
 - OVERFLOW SCUPPER WILL BE ON THE SIDES OF CONDUCTOR HEAD, PAINT TO MATCH CMU #320
 - METAL TRELLIS, SEE DETAIL A3/A-701
 - ALUM. STOREFRONT SYSTEM W/ 1" INSULATED CLEAR TEMPERED GLAZING
 - PAINTED HM DOOR, PAINT TO MATCH C-3
 - GAMCO STAINLESS STEEL TRANSACTION SHELF, 18"x24" STAINLESS STEEL
 - BLUEWAVE SIGN, FRAMING & ATTACHMENTS BY SIGN MFR. G.C. TO COORDINATE W/ METAL PANEL INSTALLATION
 - LIGHT FIXTURE BEYOND
 - BUILDING ADDRESS, 6" NUMERALS, ILLUMINATED
 - ACCESSIBLE UNISEX RESTROOM SIGNAGE, SEE 17/G-102B
 - CEMENT PLASTER, SEE ELEVATION NOTE 1
 - CONTROL JOINT, SEE DETAIL 612/A-702
 - PAINT CONCRETE STEM WALL TO MATCH C-3 CMU

- ELEVATION NOTES**
- CEMENT PLASTER SHALL BE 7/8" THICKNESS OVER EXPANDED METAL LATH ATTACHED WITH FASTENERS PER CBC SECTION 2512, OVER WEATHER BARRIER. WEATHER BARRIER TO BE TYVEK COMMERCIAL BUILDING WRAP INSTALLED PER THE MANUFACTURER WITH TAPED SEAMS AND WITH EDGES SEALED TO FLASHING WITH DUPONT STRAIGHT FLASH SELF ADHERING FLASHING. PLASTER FINISH TO BE MEDIUM DASHED FINISH.



BLUEWAVE SPARKS, NV

N. McCARRAN BLVD. AND WEDEKIND RD.

CLIENT REVISED	
CLIENT REVISIONS	06.18.2019
AGENCY ISSUE/REVISED	
PLAN CHECK REVISION	06.18.2019
ISSUED FOR PERMIT	12.19.2018
ISSUED / REVISED	
Project Number	222310634
Drawn By	RAM
Checked By	GMS

Exhibit 6

0 30" 5' 10'

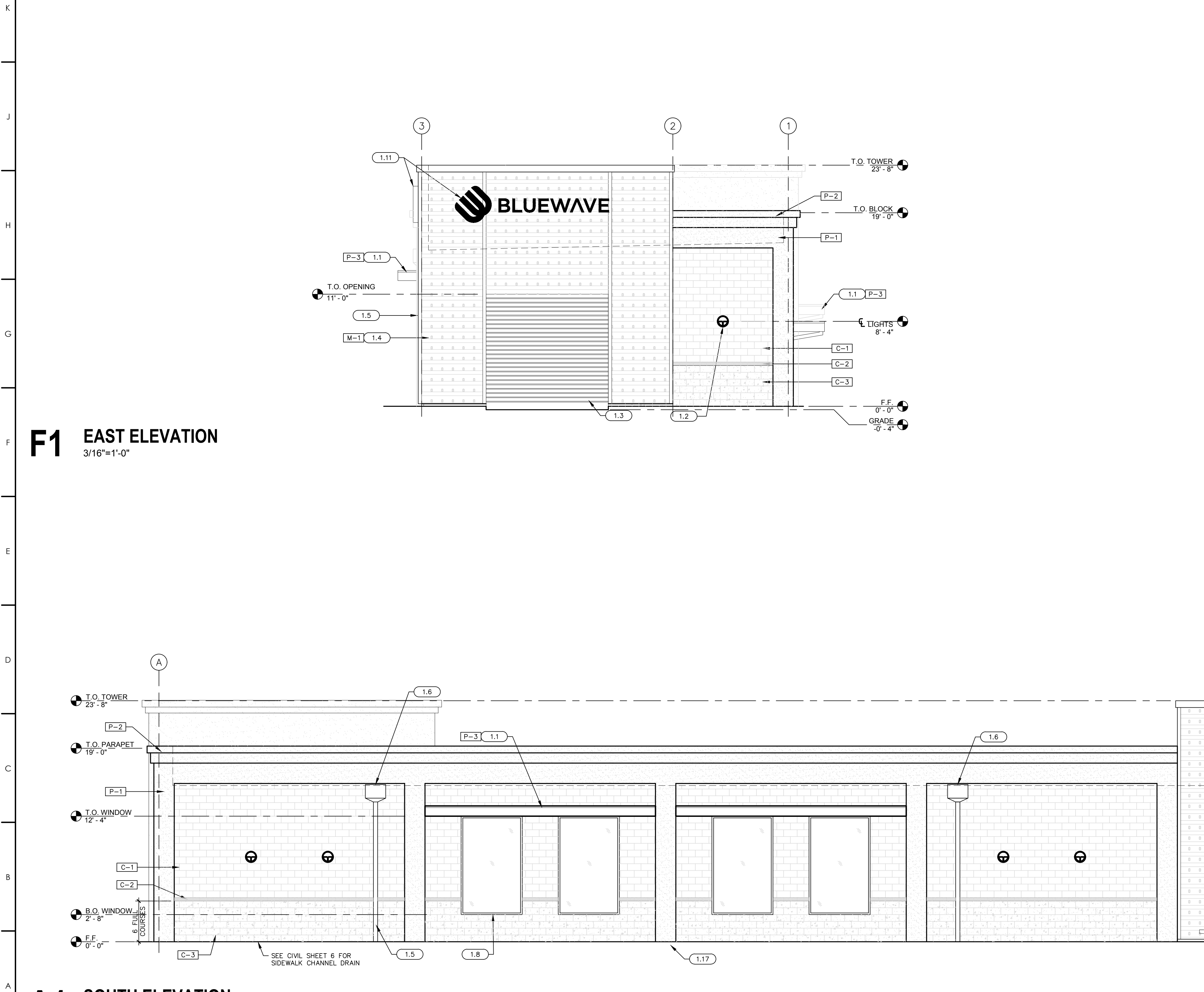
SCALE: 3/16"=1'-0"

A300

BUILDING ELEVATIONS

V:\222310634\architecture\drawing\05_222310634_A300.dwg modified by maddock on 7/12/2019 1:45 PM

1 2 3 4 5 6 7 8 9 10 11 12 13 14



EXTERIOR COLOR LEGEND

MARK	COLOR	MATERIAL	MANUF.
P-1	DRIFT WOOD	STUCCO	BENJAMIN MOORE
P-2	SIERRA SPRUCE	STUCCO	BENJAMIN MOORE
P-3	BLUE		
C-1	320	GROUND FACE CMU	BASALITE
C-2	684	SMOOTH FACE CMU	BASALITE
C-3	336	SPLIT FACE CMU	BASALITE
M-1	A23	CORRUGATED, PERFORATED METAL PANEL SYSTEM	ATAS INTERNATIONAL

- ELEVATION KEY NOTES**
- PRE-ENGINEERED ALUM. CANOPY, 4'-0" DEEP (TYP.)
 - SCHEDULED WALL MOUNTED LIGHT FIXTURE
 - PRE-FINISHED ROLLING OVERHEAD DOOR
 - CORRUGATED PERFORATED METAL PANEL SYSTEM, PROVIDE 4" FRAMING GIRTS AT MIN. 48" O.C. COORDINATE W/ GROUTED CMU CELLS, GAUGE TO BE SPECIFIED AND ENGINEERED BY FRAMING SUBCONTRACTOR & COORDINATED WITH METAL PANEL MFR.
 - DOWN SPOUT, PAINT TO MATCH CMU #320
 - OVERFLOW SCUPPER WILL BE ON THE SIDES OF CONDUCTOR HEAD, PAINT TO MATCH CMU #320
 - METAL TRELLIS, SEE DETAIL A3/A-701
 - ALUM. STOREFRONT SYSTEM W/ 1" INSULATED CLEAR TEMPERED GLAZING
 - PAINTED HM DOOR, PAINT TO MATCH C-3
 - GAMCO STAINLESS STEEL TRANSACTION SHELF, 18"x24" STAINLESS STEEL
 - BLUEWAVE SIGN, FRAMING & ATTACHMENTS BY SIGN MFR. G.C. TO COORDINATE W/ METAL PANEL INSTALLATION
 - LIGHT FIXTURE BEYOND
 - BUILDING ADDRESS, 6" NUMERALS, ILLUMINATED
 - ACCESSIBLE UNISEX RESTROOM SIGNAGE, SEE 17/G-102B
 - CEMENT PLASTER, SEE ELEVATION NOTE 1
 - CONTROL JOINT, SEE DETAIL 612/A-702
 - PAINT CONCRETE STEM WALL TO MATCH C-3 CMU

- ELEVATION NOTES**
- CEMENT PLASTER SHALL BE 7/8" THICKNESS OVER EXPANDED METAL LATH ATTACHED WITH FASTENERS PER CBC SECTION 2512, OVER WEATHER BARRIER. WEATHER BARRIER TO BE TYVEK COMMERCIAL BUILDING WRAP INSTALLED PER THE MANUFACTURER WITH TAPED SEAMS AND WITH EDGES SEALED TO FLASHING WITH DUPONT STRAIGHT FLASH SELF ADHERING FLASHING. PLASTER FINISH TO BE MEDIUM DASHED FINISH.

F1 EAST ELEVATION
3/16"=1'-0"

A1 SOUTH ELEVATION
3/16"=1'-0"



BLUEWAVE SPARKS, NV

N. McCARRAN BLVD. AND WEDEKIND RD.

CLIENT REVISED

CLIENT REVISIONS 06.18.2019

AGENCY ISSUE/REVISED

PLAN CHECK REVISION 06.18.2019
ISSUED FOR PERMIT 12.19.2018

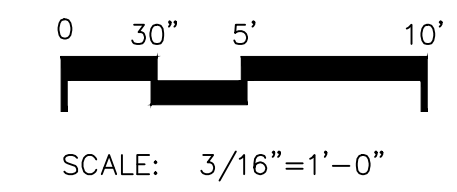
ISSUED / REVISED

Project Number 222310634

Drawn By RAM

Checked By GMS

A301
BUILDING ELEVATIONS



Color Legend:

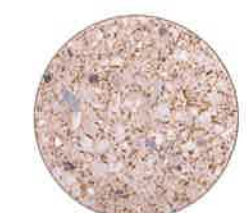
Benjamin Moore
#2107-40 "Drift Wood"



Benjamin Moore
#2108-20 "Sierra Spruce"



Alpolic DYB Blue



Basalite
Ground Face #320



Basalite
Smooth Face #684



Basalite
Ground Face #336



Corrugated Perforated
Metal Panel System



North Elevation



West Elevation



BlueWave
N. McCarran Blvd. and Wedekind Rd.
Sparks, NV



Color Legend:

Benjamin Moore #2107-40 "Drift Wood"



Benjamin Moore #2108-20 "Sierra Spruce"



Alpolic DYB Blue



Basalite Ground Face #320



Basalite Smooth Face #684



Basalite Ground Face #336



Corrugated Perforated Metal Panel System



South Elevation



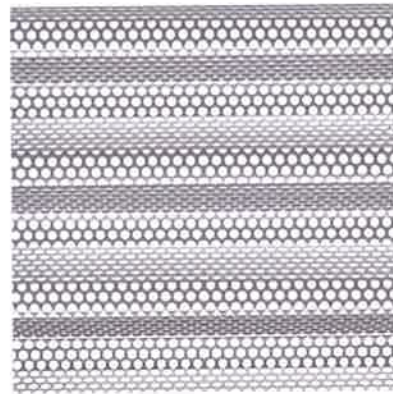
East Elevation



BlueWave
N. McCarran Blvd. and Wedekind Rd.
Sparks, NV

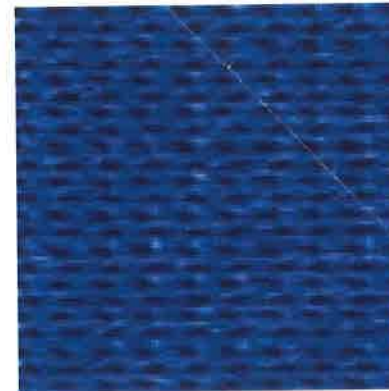


METAL



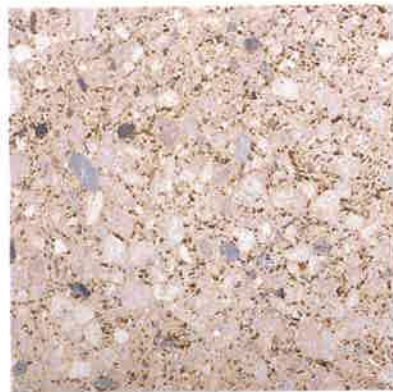
CORRUGATED PERFORATED
METAL PANEL SYSTEM

AWNING



SYNTHESIS COMMERCIAL 95
"AQUATIC BLUE" #444938

CMU BLOCK



BASALITE GROUND FACE #320

PAINT



ALPOLIC DYB BLUE



BASALITE SPLIT FACE #336

<p>COLOR MATERIAL BOARD</p>	<p>BLUEWAVE ELK GROVE</p> <p>9660 EAST STOCKTON BLVD. ELK GROVE, CA 95624</p>	 <p>1201 J STREET, STUDIO 100 SACRAMENTO, CA 95814-2927 Tel. (916) 442-3230 Fax (916) 422-3249</p>	
------------------------------------	--	---	---